

Roger On™ iN V2

Technical data.

roger

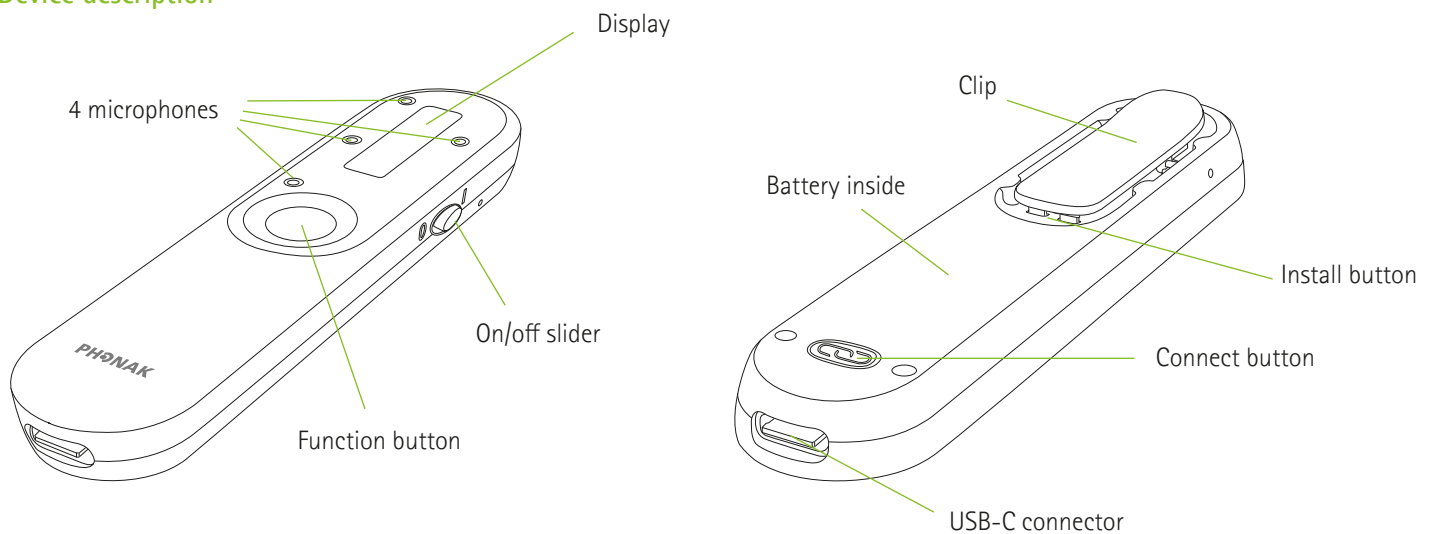
Roger On is a versatile microphone dedicated for all conversation where background noise is present or when there the talker is at a distance. It features MultiBeam 2.0 Technology and Pointing mode 2.0. Personalization and remote control of the Roger On is easy with the new myRogerMic app. Roger On is compatible with all hearing devices with RogerDirect™ and all Roger receivers.

Technical data

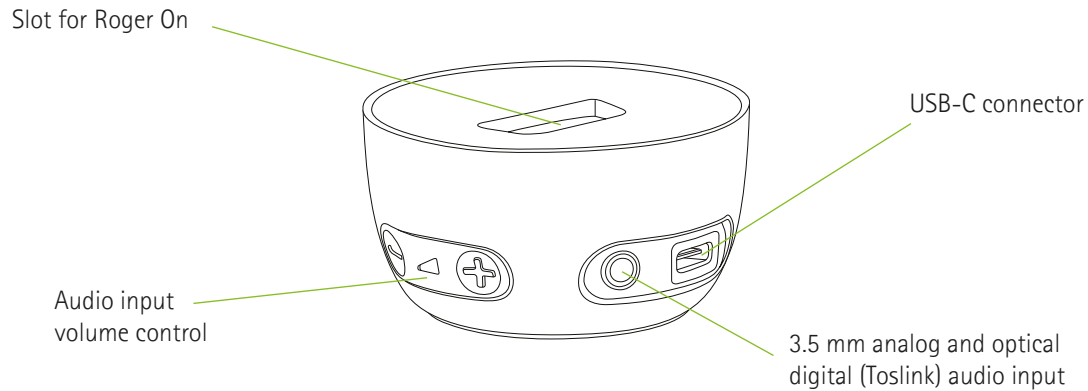
| | |
|----------------------------------|--|
| Type | Roger microphone |
| Dimensions (L x W x H) | 99.7 x 23.5 x 13.6 mm (3.93 x 0.93 x 0.54") |
| Weight | 27 g (0.95 oz) |
| Color options | Champagne, Graphite Gray |
| Included accessories | Power supply with USB cable, docking station, optical audio cable, analog audio cable, lanyard, case |
| Operating conditions | 0° to +40° Celsius (+32° to +104° Fahrenheit) Relative humidity of <90% (non-condensing) |
| Transport and storage conditions | -20° to +60° Celsius (-4° to +140° Fahrenheit) Relative humidity of 90% for a long period of time |



Device description

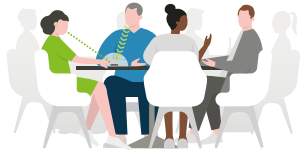


Docking station description



Use cases

On the table



Restaurant

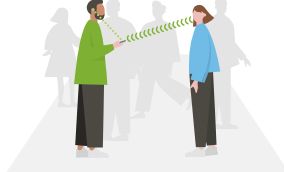


Meeting

Hold in the hand (pointing)

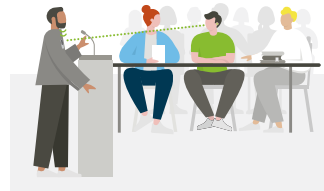


Party



Face-to-face

Worn by a presenter / talker



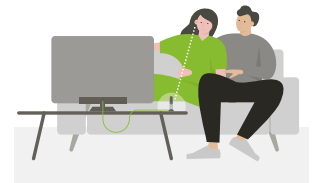
Presentation / lecture



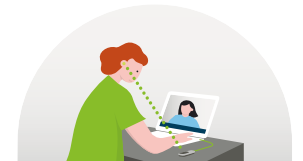
Class

Car

Streaming audio



Watching TV / streaming audio



Online calls

Features

- Proven Roger speech-in-noise performance¹
- MultiBeam 2.0 Technology with RogerDirect / MultiBeam Technology with other Roger receivers
- Orientation independent presenter mode
- Pointing mode 2.0
- Audio input for multimedia
- Multiple microphone use in a network (MultiTalker Network)
- Protected against splash and dust IP54
- App for beam steering and remote control
- New with Roger On V2: Headset mode for online calls

Roger installation

Roger On iN contains two Roger receivers that can be installed into a pair (two) of hearing devices with RogerDirect.

myRogerMic app



Microphone characteristics

| | |
|-----------------------|----------------------------|
| Number of microphones | 4 |
| Microphone modes | Table, Pointing, Presenter |

Radio information

| | |
|--|---|
| Streaming technology | Roger technology |
| Frequency range | 2.4 GHz ISM band including adaptive automatic frequency hopping |
| RF power | 100 mW max. |
| Transmission range (clear line of sight, free field) | Up to 25 meters / 80 feet |

Audio information

| | |
|-----------------------------|---|
| Audio input | Digital and analog via USB-C socket |
| Two-way audio | Digital via USB-C socket |
| Audio input docking station | - Digital optical (Toslink) - Analog via 3.5 mm socket |
| Supported digital formats | Stereo (PCM) |
| Max. analog voltage | 1 Vrms |
| Audio bandwidth | 100 Hz – 7.3 kHz |

Power supply

| | |
|-------------------|---|
| Type | DC, stabilized |
| Primary voltage | 100-240 V |
| Secondary voltage | 5 VDC |
| Max. current | 1.0 A |
| Plug | USB-C |
| Important notice | Only use the original USB Phonak power supply 5VDC, > 500 mA |

Battery

| | |
|----------------|---|
| Type | Lithium Polymer |
| Capacity | 260 mAh |
| Voltage | 3.7 V |
| Operating time | 8h when using hearing device with RogerDirect 6h when using Roger receiver |

Receiver compatibility

| | |
|----------------------------|---|
| Compatible Roger receivers | All personal Roger receivers, except SoundField |
| Max. connected receivers | Unlimited |

Microphone compatibility (MultiTalker Network)

A Roger On in a MultiTalker Network functions only in Presenter mode (hanging around the neck or clipped on the chest)

| | |
|------------------------------|--|
| Compatible Roger microphones | Roger On™ Roger Select™ Roger Table Mic II Roger Clip-On Mic Roger On™ iN Roger Select™ iN Roger Table Mic II iN |
| Max. connected microphones | Up to 10 |

Standards

| | |
|--------|--|
| Europe | EN 300 328, EN 301 489, EN 62368-1, IEC/EN 62311 |
| Canada | RSS-247, RSS-102 |
| Japan | ARIB-T66 |
| USA | CFR 47, part 15.247, FCC OET Bulletin No.65 |

Ingress protection

| | |
|------|-----------------------------------|
| IP54 | Protected against splash and dust |
|------|-----------------------------------|

¹ Thibodeau L. M. (2020). Benefits in Speech Recognition in Noise with Remote Wireless Microphones in Group Settings. Journal of the American Academy of Audiology, 31(6), 404-411.