

# Phonak

## Roger On™



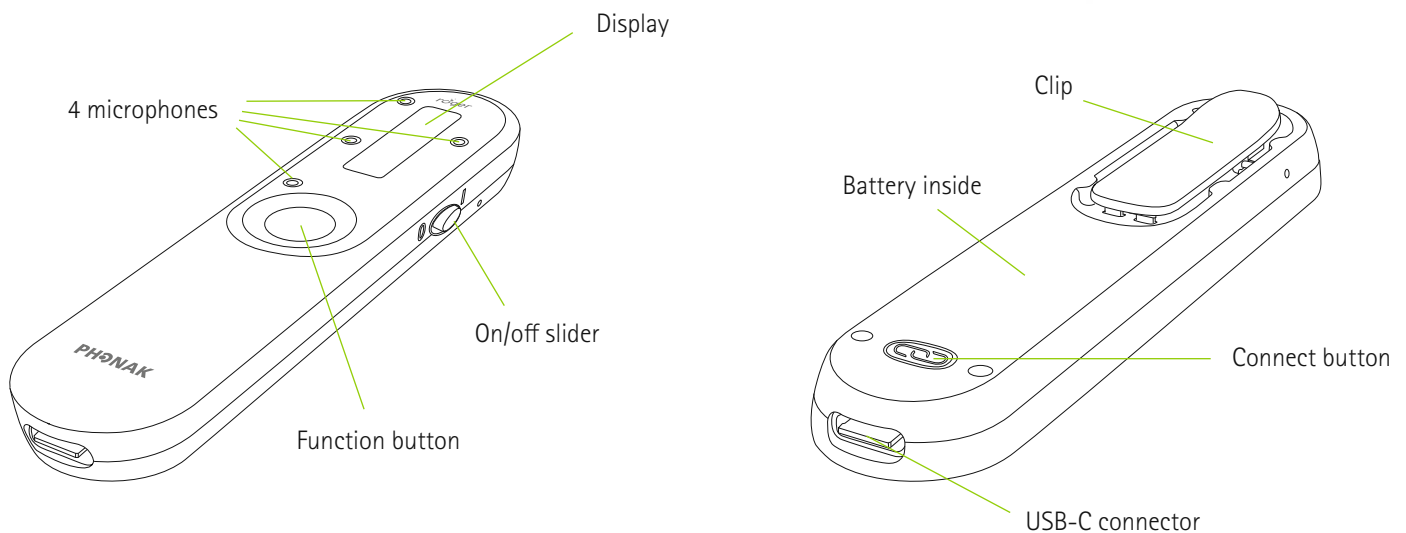
Roger On is a versatile microphone dedicated for all conversation where background noise is present or when there is a distance to the talker. It features MultiBeam 2.0 Technology and Pointing mode 2.0. Personalization and remote control of the Roger On is easy with the new myRogerMic app. Roger On is compatible with all hearing devices with RogerDirect™ and all Roger receivers.

### Technical Data

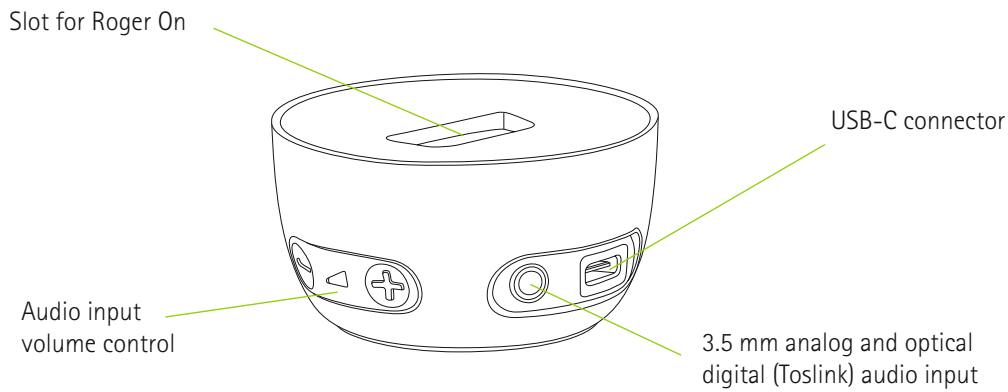
Type	Roger microphone
Dimensions (L x W x H)	99.7 x 23.5 x 13.6 mm (3.93 x 0.93 x 0.54")
Weight	27 g (0.95 oz)
Color options	Champagne, Graphite Gray
Included accessories	Power supply with USB cable, docking station, optical audio cable, analog audio cable, lanyard, case
Operating conditions	0° to +40° Celsius (+32° to +104° Fahrenheit) Relative humidity of <90% (non-condensing)
Transport and storage conditions	-20° to +60° Celsius (-4° to +140° Fahrenheit) Relative humidity of 90% for a long period of time



### Device description



## Description docking station

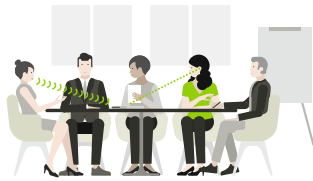


## Use cases

### On the table



Restaurant

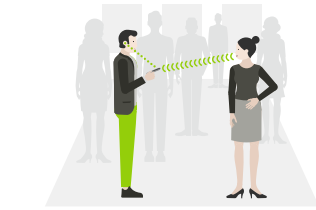


Meeting

### Hold in the hand (pointing)

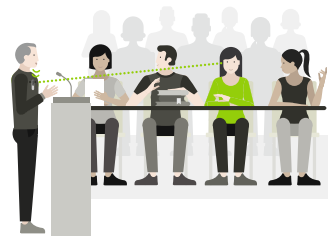


Party

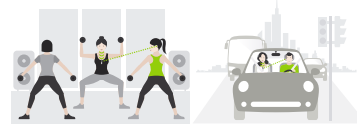


Face-to-face

### Worn by a presenter/talker

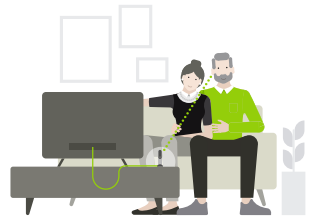


Speech



Class

### Streaming TV audio



Watching TV

## Features

- Proven Roger speech-in-noise performance<sup>1</sup>
- MultiBeam 2.0 Technology with RogerDirect / MultiBeam Technology with other Roger receivers
- Orientation Independent presenter mode
- Pointing mode 2.0
- Audio input for multimedia
- Multiple microphone use in a network (MultiTalker Network)
- Protected against splash and dust IP54
- App for beam steering and remote control

## myRogerMic app



The Apple App Store logo is a trademark of Apple Inc.  
The Google Play store logo is a trademark of Google LLC.

## Microphone characteristics

Number of microphones	4
Microphone modes	Table, Pointing, Presenter

## Radio information

Streaming technology	Roger technology
Frequency range	2.4 GHz ISM band including adaptive automatic frequency hopping
RF power	100 mW max.
Transmission range (clear line of sight, free field)	Up to 25 meters / 80 feet

## Audio information

Audio input	Digital and analog via USB-C socket
Audio input docking station	- Digital optical (Toslink) - Analog via 3.5 mm socket
Supported digital formats	Dolby Audio, Stereo (PCM)
Max. analog voltage	1 Vrms
Audio bandwidth	100 Hz – 7.3 kHz

## Power supply

Type	DC, stabilized
Primary voltage	100-240 V
Secondary voltage	5 VDC
Max. current	1.0 A
Plug	USB-C
Important notice	Only use the original USB Phonak power supply 5VDC, > 500 mA

## Battery

Type	Lithium Polymer
Capacity	260 mAh
Voltage	3.7 V
Operating time	8h when using hearing device with RogerDirect 6h when using Roger receiver

## Receiver compatibility

Compatible Roger receivers	All personal Roger receivers, except SoundField
Max. connected receivers	Unlimited

## Microphone compatibility (MultiTalker Network)

A Roger On in a MultiTalker Network functions only in Presenter mode (hanging around the neck or clipped on the chest)

Compatible Roger microphones	Roger On™ Roger Select™ Roger Table Mic II Roger Pen™ Roger EasyPen Roger Clip-On Mic Roger On™ iN Roger Select™ iN Roger Table Mic II iN Roger Pen™ iN
Max. connected microphones	Up to 10

## Standards

Europe	EN 300 328, EN 301 489, EN 62368-1, IEC/EN 62311
Canada	RSS-247, RSS-102
Japan	ARIB-T66
USA	CFR 47, part 15.247, FCC OET Bulletin No.65

## Ingress protection

IP54	Protected against splash and dust
------	-----------------------------------

● **Dolby Audio** Dolby, Dolby Audio and the double-D symbol are trademarks of Dolby Laboratories.

<sup>1</sup> Thibodeau, L. (2014). Comparison of speech recognition with adaptive digital and FM wireless technology by listeners who use hearing aids. American Journal of Audiology, 23(2), 201-210.