

ROGER TOUCHSCREEN CHEAT SHEET

Getting Started


Turn On

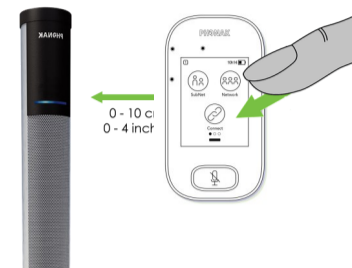
Press and hold on/off button for at least 3 seconds until you get green flashing light on the Touchscreen. Swipe the screen of the Touchscreen left or right to access the menus.



Connect to Soundfield Speaker

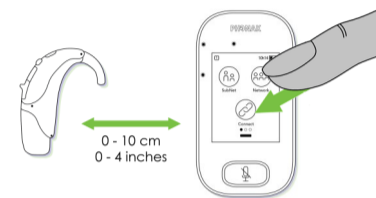
Turn the Soundfield Speaker on using the switch at the bottom of the speaker. A blue light will flash at the top of the speaker.



Hold the Touchscreen within 5 cm of the Soundfield Speaker. Press **Connect**  on the front screen of the Touchscreen. The Soundfield Speaker light will be solid blue when connected.



Connect to Hearing Aid Receiver / Neckloop (if required)

Hold the Touchscreen within 5 cm of either the In-built Roger Receiver, Roger X Receiver or Roger Neckloop. Press **Connect** on the front screen of the Touchscreen. The student will hear a beep upon connection.



To check what devices are connected to the Touchscreen, select **List Devices**  the connected devices within 5cm will be displayed. Devices will remain connected until the network is reset by selecting **New Net** .

Begin Teaching / Talking

Connect the Touchscreen to the lanyard and place the Touchscreen around the neck and shorten the lanyard by pulling the strap so the device is within 15cm of the mouth. Begin talking.

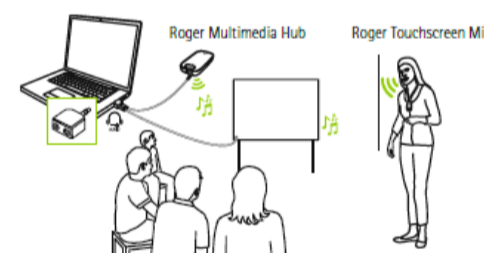
Press the Mute button to activate / deactivate the microphone as required.

The Mute button light will be solid green when transmitting and flash red when muted. The light will be blue if the Touchscreen is the secondary mic in a team teaching network.



(Option) Direct Connection to Audio Device

Connect the Touchscreen to any device for direct audio input, using the 3.5mm audio cable plugged into the headphone jack or audio-out source on the audio device.



Recommended Compatible Devices

Roger Neckloop Roger X or iN Receiver Roger Focus Roger Media Hub Roger Pass-Around Mic Roger Wall Pilot



Tips:

- Wall Pilots should be connected prior to other devices as they may reset existing connections. Refer to Wall Pilot Cheat Sheet.
- When connecting to a telephone or digital TV, an adaptor may be required. Refer to Troubleshooting guides or contact phone support for advice.
- Touchscreen must be upright for microphone & pass-around use. Lay flat for group mode only.