

# BRaille SIGN INSTALLATION

## Specification D3.6

### 1. Scope

This specification sets out the requirements for the design and installation of Braille and Tactile Signage as required by D3.6

### 2. Location of Braille and Tactile Signs

Signs including symbols, numbering and lettering must be designed and installed as follows:

A. Braille and Tactile components of a sign must be located not less than 1200mm and not higher than 1600mm above the floor or ground surface.

B. Signs with single lines of characters must have the line of tactile characters not less than 1250mm and not higher than 1350mm above the floor or ground surface.



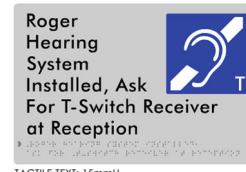
## Recommendations

**Glass Surfaces**—For aesthetic reasons we recommend signs are placed on both sides of glass / transparent walls and doors.

**Doors**—If signs are placed on the doors, a sign should be placed on both sides of the door so that the sign is visible when open and closed. If not possible, the sign should be on the internal side of the door.

**Sign Selection**—Landscape (Default) and Portrait Style Signs are available

**Sign Height**—Signs should be installed at a uniform height for aesthetics and ease of access



## How to Install

### Surface Preparation:

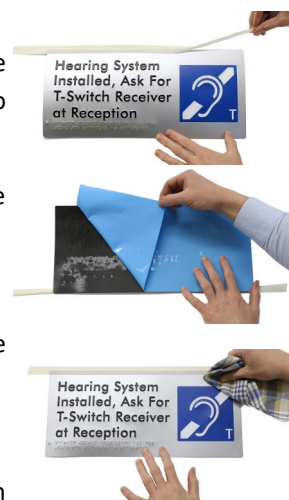
- Before applying your BTS to any surface, the area must be cleaned using an appropriate degreaser. Be sure not to use any oil based solvents, as this will affect the adhesion of the sign to the surface.
- Once sign has made contact with the surface, the sign will be adhered. Remove any masking tape or marking and clean sign.

### Installation:

STEP 1 - Apply a strip of masking tape along your chosen edge, run your nail along the edge to create a hinge.

STEP 2 - Using your masking tape hinge, flip sign over and peel backing paper off the adhesive.

STEP 3 - Wrap a lint free cloth around your thumb or fingers. Holding the opposite edge of the sign away from the surface, slowly begin working your way from side to side across the surface, (starting from the hinge edge) applying firm pressure with the cloth. Slightly overlap each stroke, making sure no air gets between the sign and the surface.



**Hearing Loop Australia**  
Keeping your audience in the loop

www.hearingloop.com.au  
info@hearingloop.com.au  
1300 669 721